

Special application

# Superior Pre-filter Actifiber is the best pre-filter of any filtration system.

In case high turbidity comes into raw water (i.e. river natural surface water)  
 ★ Maximum 100NTU turbidity water would treat to less than 5 NTU (with coagulant)  
 ★ Rapid flow rate LV50m/hr (1200m/day)  
 Actifiber makes the following filtration quality stabilize.

Surface water · Underground water · Well water  
 Max. Turbidity 100NTU



Membrane filtration



Turbidity load to membrane filter will be decreased and frequencies of backwash and replacement would be reduced.

Filtmat(SLED) filter



Actifiber is suitable for pre-filtration of Filtmat (SLED) filter, the appropriate measure of Cryptosporidium contamination.

Slow sand filtration



SS catching spaces of sand will be protected and removal work frequencies of sand layer surface would be reduced.

Removing Ferrous and Manganese filtration system

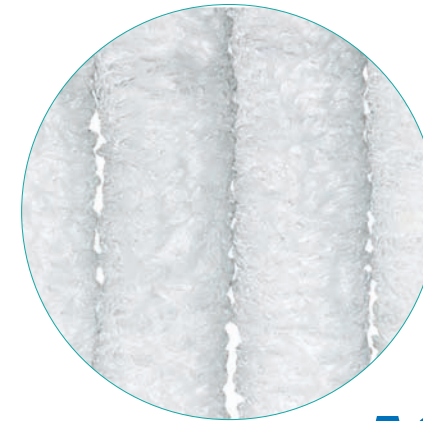


Turbidity and ferrous load will be decreased.

Rapid sand filtration



Turbidity load will be decreased.



AF-S  
 (For microfiltration)

High Speed Fiber Filtration Media

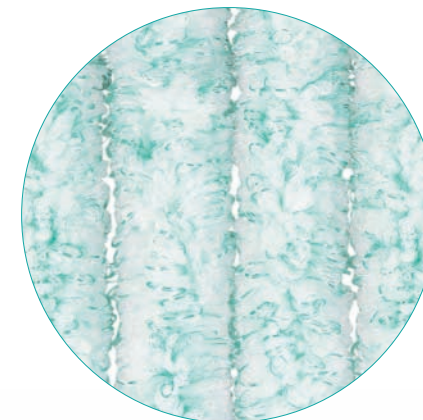
## ACTIFIBER FILTRATION UNIT

1000mm series

1500mm series



AF-P  
 (For purification · industrial water filtration)



AF-R  
 (For circulation · waste water filtration)



1-12-11 Tagawakita, Yodogawa-ku, Osaka 532-0021

FOREIGN BUSINESS SECT.  
 Tel:+81-6-6301-6460  
 Fax:+81-6-6308-3022

URL:<http://www.tohkemy.co.jp/>



AGENCY

CT No. EX-05 201106UR50  
 CLEAN ENERGY SOY BANK  
 2011年6月1日より実施する環境省の「クリーンエネルギー」認定制度に認定されています。

High Speed Fiber Filtration Media



# ACTIFIBER FILTRATION UNIT

Compact , Light weight , Space and waste saving **1000mmseries**

## In comparison with conventional filtration unit

filtration speed, SS capture rate    Washing water volume    Installation area    Total cost of filtration system

$\times 5 \times 1/8 \star 1/4 \rightarrow 20\%$  **DOWN**  
(from our experience)

### Features of ACTIFIBER 1000mm series

- Compact design**  
Not only saving a space but also lowering a height for installation.  
Total height of sand filtration unit : 3500 ~ 5000mm  
AFU-1000mm series: 2500mm max.
- Light weight , Easy field work**  
Light filter vessel made from FRP  
No need to put media into tank at user's place
- 5 times of SS capture rate compared with sand filtration (from our experience)**  
Sand filtration unit : 1.5kg/ m<sup>3</sup> < AF 1000mm series : 7.5kg/ m<sup>3</sup>
- 5 times of filtration speed compared with sand filtration (from our experience)**  
sand filtration unit : LV8m/h < AF 1000mm series : LV40m/h



Installable with only 3000mm of ceiling height and 900mm × 1800mm of frontage even in a narrow space

Even in a mountain side light weight truck can go



In a space between facilities.

### ACTIFIBER filtration unit 1000mm series Standard specification

Standard Model	AFU-□ 300-FVA	AFU-□ 400-FVA	AFU-□ 500-FVA	AFU-□ 600-FVA	Remark
Filter vessel I.D.	φ 300mm	φ 400mm	φ 500mm	φ 600mm	-
Standard treatment capacity	1.4 ~ 3.5m <sup>3</sup> /h	2.5 ~ 6.2m <sup>3</sup> /h	3.9 ~ 9.8m <sup>3</sup> /h	5.6 ~ 14m <sup>3</sup> /h	LV20 ~ 50m/h
Washing drainage	Approx. 0.4 m <sup>3</sup>	Approx. 0.7 m <sup>3</sup>	Approx. 1.0 m <sup>3</sup>	Approx. 1.4 m <sup>3</sup>	Drainage Volume per process
Washing time	20 minutes				Standard washing process
Filter vessel material	G-FRP				Epoxy vinyl ester etc.
Pipe material	VP (SGP partly)				HI-VP, SUS304,SGP(Optional)
Automatic valve	Dual air operated butterfly valve (SCS14/EPDM)				Electric-operated valve(Optional)
Other	With skid base				-

\* Please select and put S (for microfiltration ), P (for purification, industrial water) or R (for circulation, waste water) in

High Speed Fiber Filtration Media

From small to large capacity space, equipment and waste saving **1500mmseries**

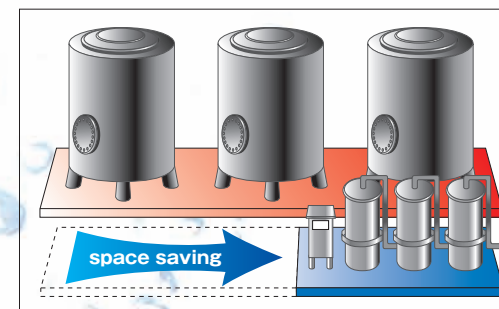
## In comparison with conventional filtration unit

filtration speed, SS capture rate    Washing water volume    Installation area    Total cost of filtration system

$\times 8 \times 1/8 \star 1/4 \rightarrow 30\%$  **DOWN**  
(from our experience)

### Features of ACTIFIBER 1500mm series

- Large volume treatment**  
Treatable of large volume by multi-units
- Easy field work**  
No need to put media into tank at user's place  
Easy filter media replacement with cartridge system
- 8 times of SS capture rate compared with sand filtration (from our experience)**  
Sand filtration unit : 1.5kg/ m<sup>3</sup> < AF 1500mm series : 12kg/ m<sup>3</sup>
- 8 times of filtration speed compared with sand filtration (from our experience)**  
sand filtration unit : LV8m/h < AFU-1500mm series : LV64m/h



1/4 of installation area with rapid filtration.

Easy filter media replacement with cartridge system and smooth start-up



Great decrease in washing water volume (=drainage volume), smaller facility for its drainage treatment.

### ACTIFIBER filtration unit 1500mm series Standard specification

Standard Model	AFU-□ 315-SSA	AFU-□ 515-SSA	AFU-□ 615-SSA	AFU-□ 915-SSA	AFU-□ 1215-SSA	AFU-□ 1415-SSA	AFU-□ 1615-SSA	Remark
Filter vessel I.D.	φ 300mm	φ 500mm	φ 600mm	φ 900mm	φ 1200mm	φ 1400mm	φ 1600mm	-
Standard treatment capacity	1.4 ~ 5.6m <sup>3</sup> /h	3.9 ~ 15m <sup>3</sup> /h	5.6 ~ 22m <sup>3</sup> /h	13 ~ 50m <sup>3</sup> /h	22 ~ 90m <sup>3</sup> /h	30 ~ 123m <sup>3</sup> /h	40 ~ 160m <sup>3</sup> /h	LV20 ~ 80m/h
Washing drainage	Approx. 0.6 m <sup>3</sup>	Approx. 1.6 m <sup>3</sup>	Approx. 2.3 m <sup>3</sup>	Approx. 5.1 m <sup>3</sup>	Approx. 9.0 m <sup>3</sup>	Approx. 12.3 m <sup>3</sup>	Approx. 16.1 m <sup>3</sup>	Drainage Volume per process
Washing time	20 minutes							Standard washing process
Filter vessel material	SUS304							-
Pipe material	SUS304 (Lap joint use : Flange CS+Zn coating in part)							HI-VP, SGP(Optional)
Automatic valve	Dual air operated butterfly valve (SCS14/EPDM)							Electric valve(Optional)
Other	Without skid base							-

\* Please select and put S (for microfiltration ), P (for purification, industrial water) or R (for circulation, waste water) in