

TOHKEMY POLYMER AUTO DISSOLVER



★ STRONG POINTS

- Dry air type having high reliability.
- Simple operation.
- Easy maintenance.
- Flexible arrangement for orientation and others according to customers' needs.
- Automatic operation just after installation.
- Compact design with only one tank to save space.
- Selectable tank material from PVC, SUS304 and FRP.
- Simple design and reasonable price.
- Much delivery record.
- New arrival of reasonable FN type with FRP tank including 100L tank.

PAD-Q/QX, PAD-Q_FN TYPE

Equipped with a Pulse-generating flowmeter and Powder sensor as standard to feed powder correctly against change of flowrate and to detect powder error in advance of trouble.

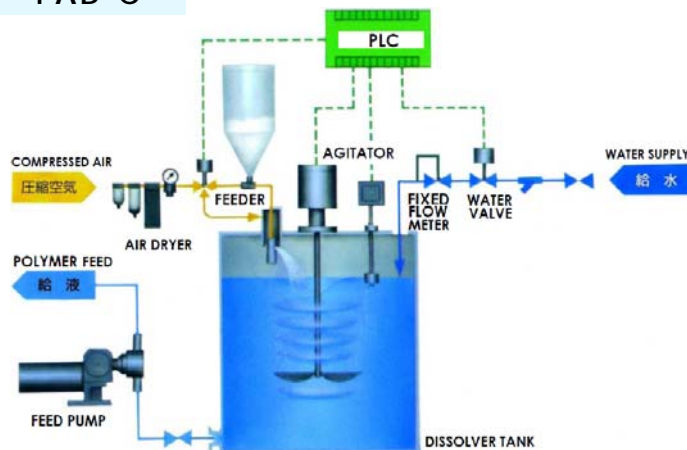
PAD-C, PAD-C_FN TYPE

Reasonable model to feed powder correctly to stable flowrate by using a constant flow valve.

PAD-Q/QX



PAD-C



Standard Specifications

Standard Model Specifications	PAD-Q4FN PAD-C4FN	PAD-Q8 PAD-C8 PAD-Q8FN PAD-C8FN	PAD-Q20 PAD-C20 PAD-Q20FN PAD-C20FN	PAD-Q40 PAD-C40	PAD-Q80 PAD-C80
Dissolving Capacity (L/H)	50 to 100	80 to 160	200 to 400	400 to 800	800 to 1600
Tank Capacity (L): Nominal Effective	120 80 to 100	200 160 to 180	500 400 to 450	1000 800 to 900	2000 1600 to 1800
Dissolving Time (Hr)	1.0 to 2.0				
Hopper Capacity (L)	8 or 15	8 or 15	15 or 30	30 or 60	30 or 60
Mixer (kW)	0.07	0.2	0.4	0.75	1.5
Feeder Model	TAF2				
Feeder Capacity	Variable from 0.5 to 3g (1.0 to 6g) of polymer per 1L (2L) of feed water				
Power Source	AC200/220V, 50/60Hz, 3-phase (Other voltages are available.)				
Power Consumption (VA)	150	300	600	1100	2200

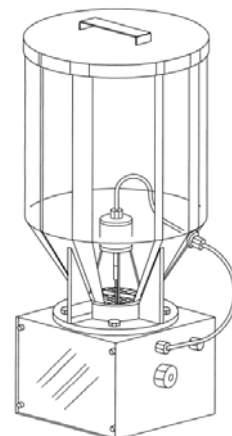
- The dissolving time will be the maximum if the dissolving time is set at 1.0Hr and will be the minimum if the dissolving time is set at 2.0Hr.
- Other condition for standard model: (1) Applicable chemical shall be powder polymer only. (2) This dissolver shall be installed indoors. (3) For the different voltage of power source, it shall be respectively designed. (4) The viscosity of solution shall be 500mP.s max.

Much Delivery Record



TAF2

This polymer feeder TAF2 is equipped with an air ejector in the powder measuring parts and evenly feeds a certain amount of polymer flocculant from the hopper by means of supplying air for feeding.



Specifications

Model	TAF2
Feeding Capacity	Cont.: 4kg/Hr min. (1g / 0.3 sec.)
Hopper Capacity	8L / 15L / 30L / 60L
Feed Air	Dry Air 20NL/min x 0.1MPa
Power Source	AC200V, 50/60Hz
Power Consumption	5VA



FOREIGN BUSINESS SECTION
1-12-11 Tagawakita, Yodogawa-ku, Osaka 532-0021, Japan
Tel: +81-6-6301-6460, Fax: +81-6-6308-3022
URL: www.tohkemy.co.jp



Designs and specifications are subject to change without notice.